

# AIR CHIEF

CAR RADIO DIVISION, ELECTRONIC INDUSTRIES LTD  
ASTOR HOUSE, 161-173 STURT STREET, SOUTH MELBOURNE PHONE 69 0300

## SERVICE DATA

HOLDEN - 7

File: HOLDEN

Date: 4-7-1966.

Page: 1

### HOLDEN MODEL "HR"

Installation Instructions for Fitting  
AIR CHIEF 12 VOLT CAR RADIO  
PUSH BUTTON MODEL PN - C7H  
and

MANUAL MODEL MN - C6H

MODEL PN - C7H RADIO PACKAGE PART NO: 7430774

MODEL MN - C6H RADIO PACKAGE PART NO: 7430772

MODEL PN - C7H LEFT HAND DRIVE

CONVERSION PACKAGE PART NO: 7427931

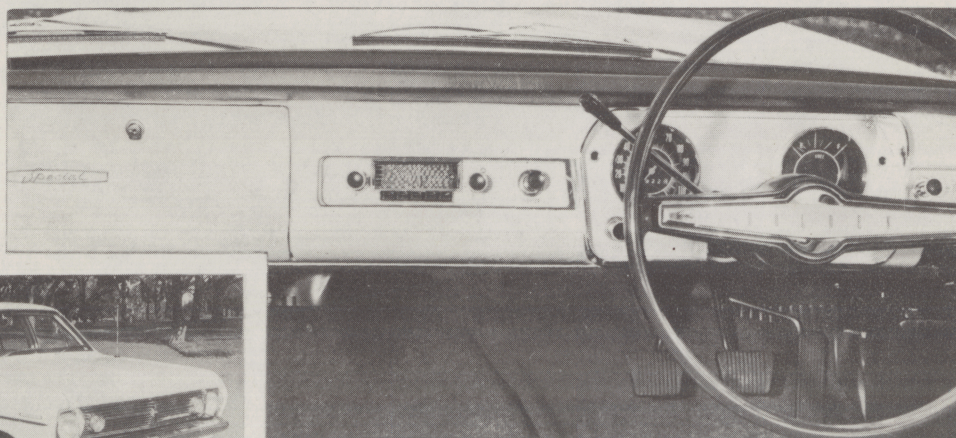
REAR SEAT SPEAKER AND FADER CONTROL

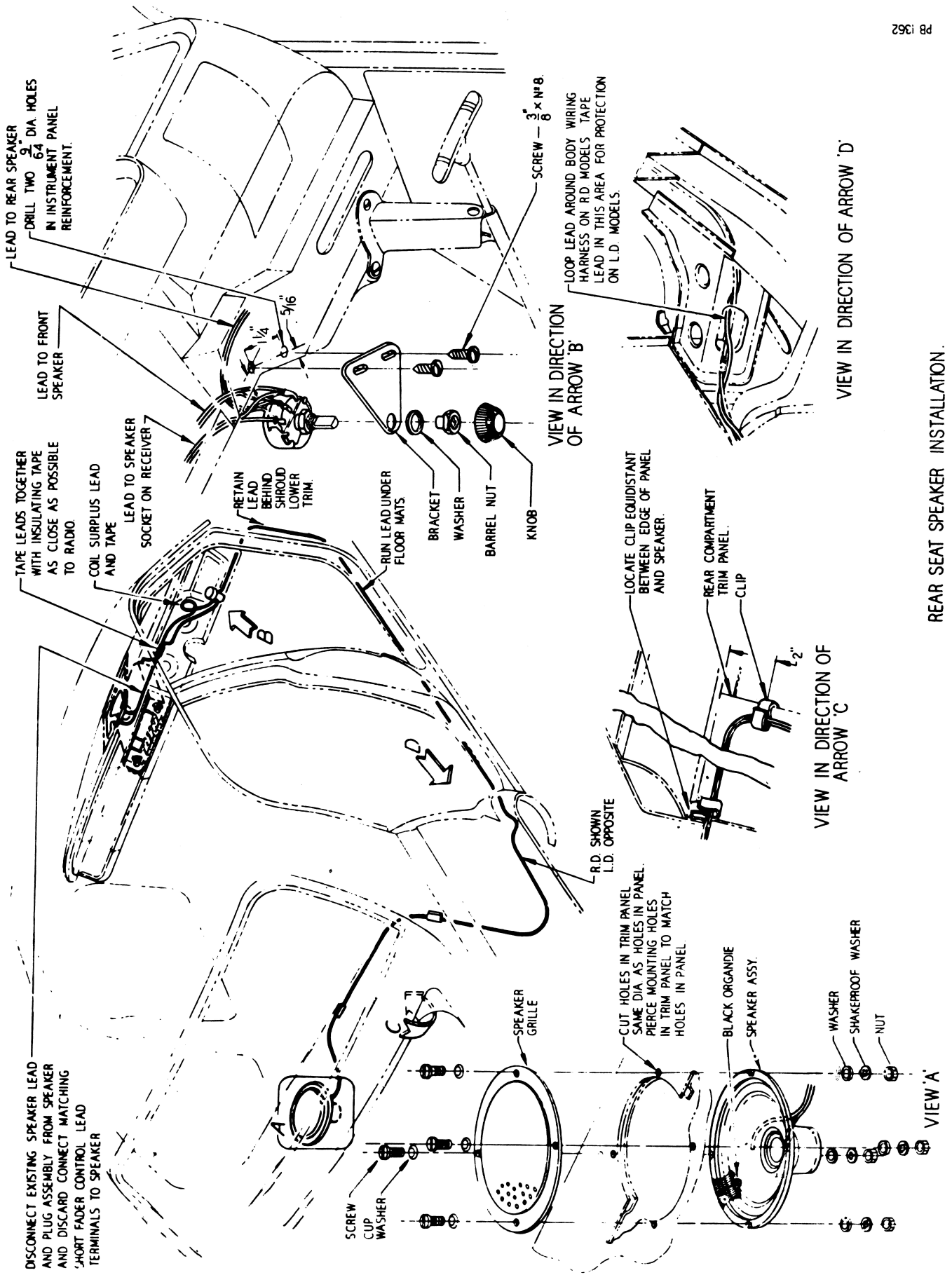
PACKAGE PART NO: 7426963

7135-274-28

**WARNING:** Battery lead of these receivers must be connected only to the positive terminal of a battery. Connection to incorrect polarity will damage the receiver.

Disconnect leads from car battery before commencing installation.





REAR SEAT SPEAKER INSTALLATION.

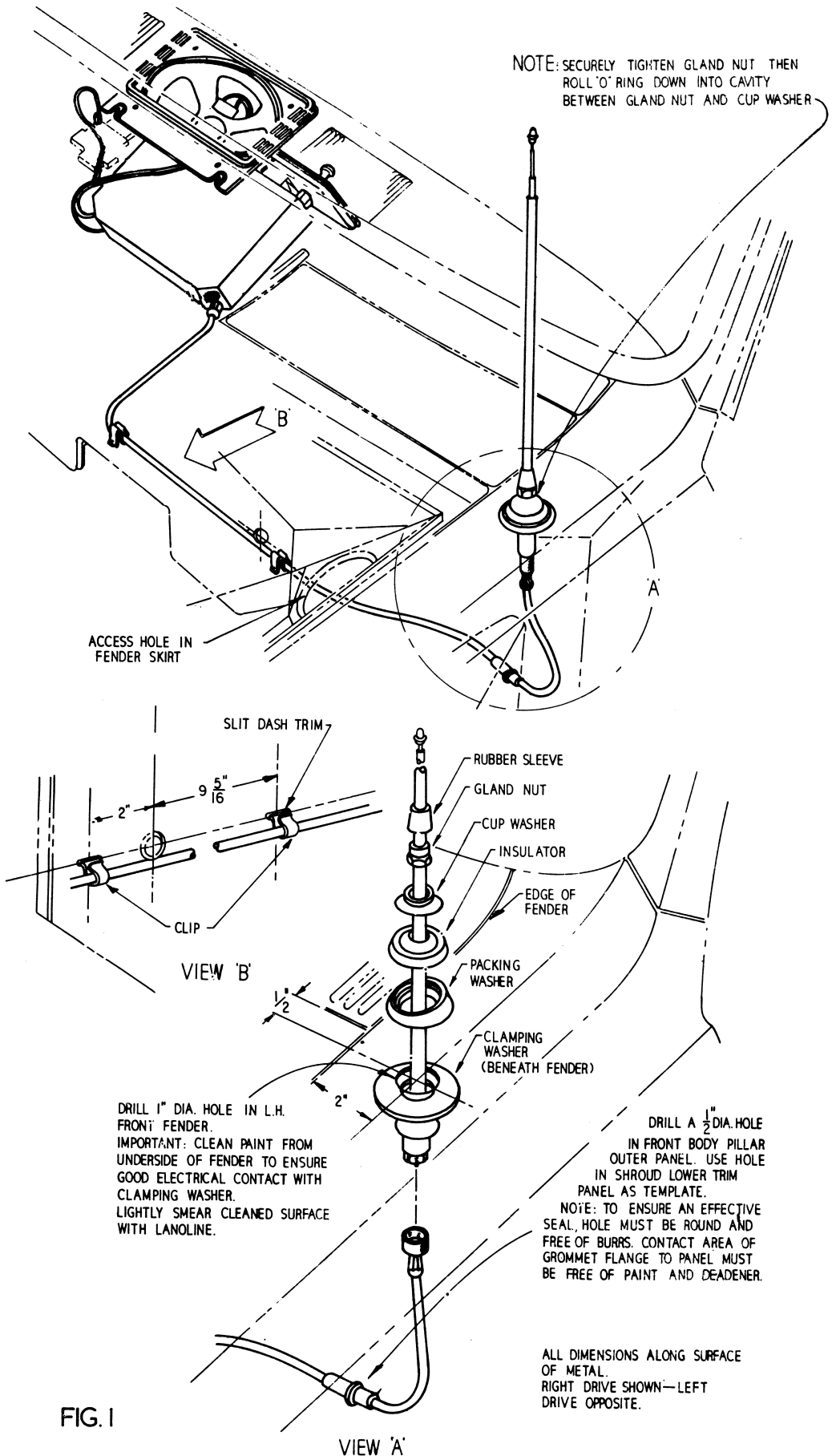
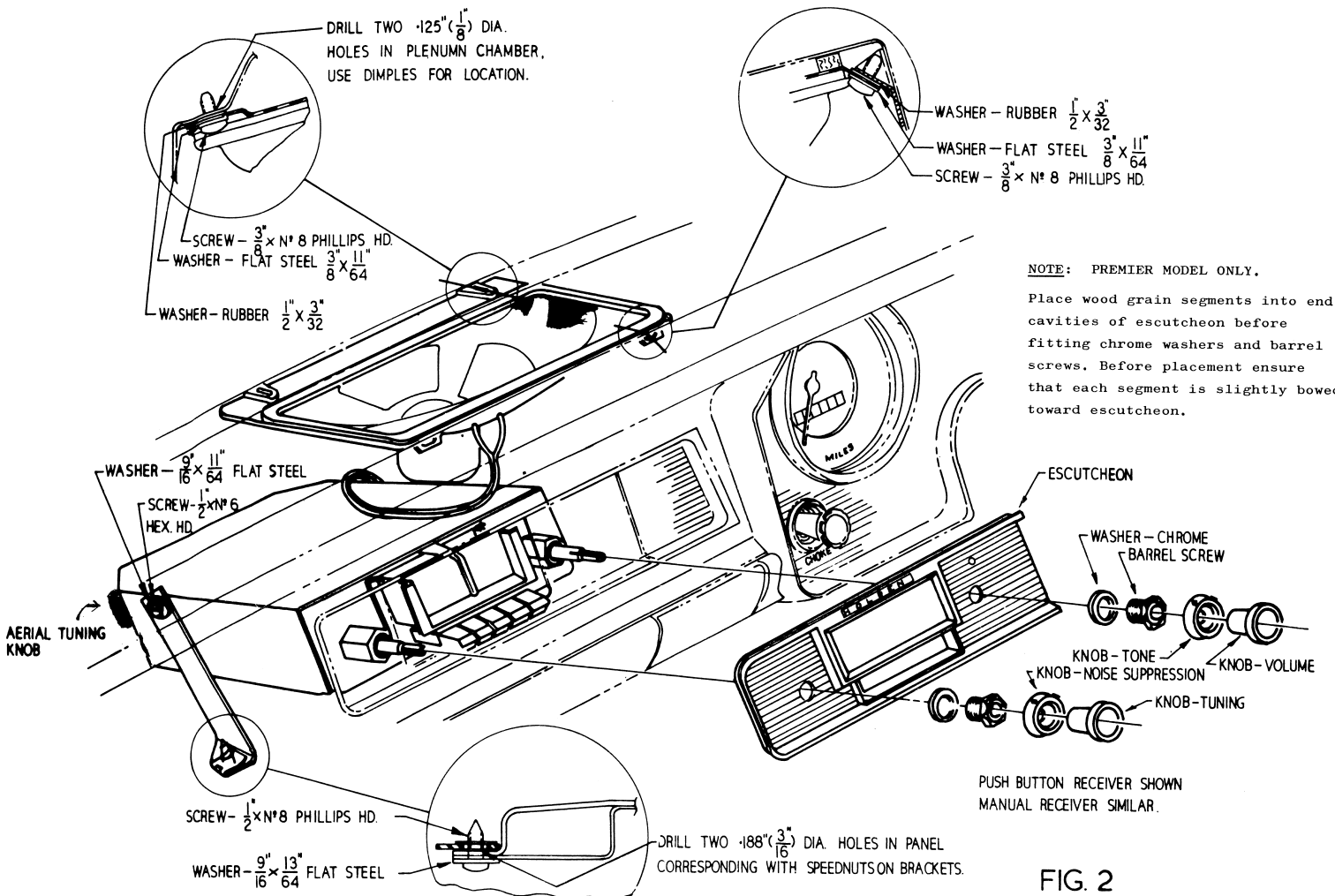


FIG. 1



**NOTE: PREMIER MODEL ONLY.**  
Place wood grain segments into end cavities of escutcheon before fitting chrome washers and barrel screws. Before placement ensure that each segment is slightly bowed toward escutcheon.

FIG. 2

**NOTE: IF A HEATER IS FITTED**

- (a) Remove both demister tubes by sliding vertically upwards and rotating to clear heater outlet, then pulling downwards off demister nozzles.
- (b) Remove both demister nozzles by springing them off the instrument panel louvres. Be careful not to damage the paint on the panel or the louvres.
- (c) Plug demist outlets in heater with rag or wadding to prevent screws dropping into heater body.
- (d) Carefully refit heater components at conclusion of installation.

**INSTALLATION SEQUENCE**

1. **FIG. 1. VIEWS A & B**  
Fit lead-in cable to aerial then assemble aerial to front fender and route lead-in cable as shown.
2. Remove windshield wiper rod from left hand pivot. Remove ash tray and carrier from panel.
3. **FIG. 2.**  
Drill two holes in plenum chamber. Assemble screws and washers to speaker mount baffle. Place and fasten baffle securely to panel. With terminals toward rear, clip and fasten speaker to baffle with flat washers and 5/8" x No. 6 Phillips hd. screws.  
**NOTE:** Foam pad on speaker is to insulate speaker from control cable.
4. **FIG. 2.**  
Discard radio aperture cover plate then install radio as shown.
5. **FIG. 3.**  
Assemble fuse block components.
6. **FIG. 4. Page 5**  
Install interference suppression capacitors.  
**NOTE:** Regulator by-pass capacitor not required if Lucas unit is fitted.
7. Raise aerial to half extended height, tune receiver to a weak station near 1000 Kc/s. (approximate centre of dial.) Adjust aerial tuning control knob on side of receiver for maximum volume.  
Refit windshield wiper rod, ash tray and carrier.

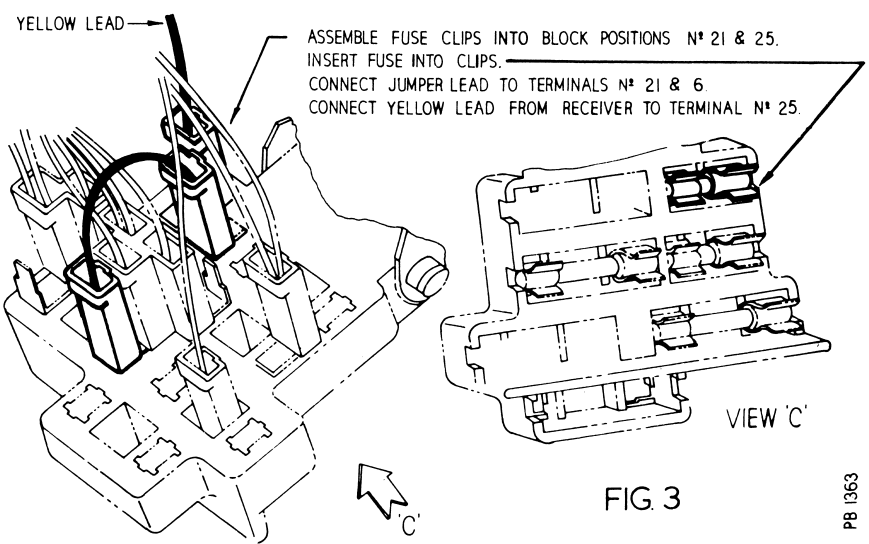
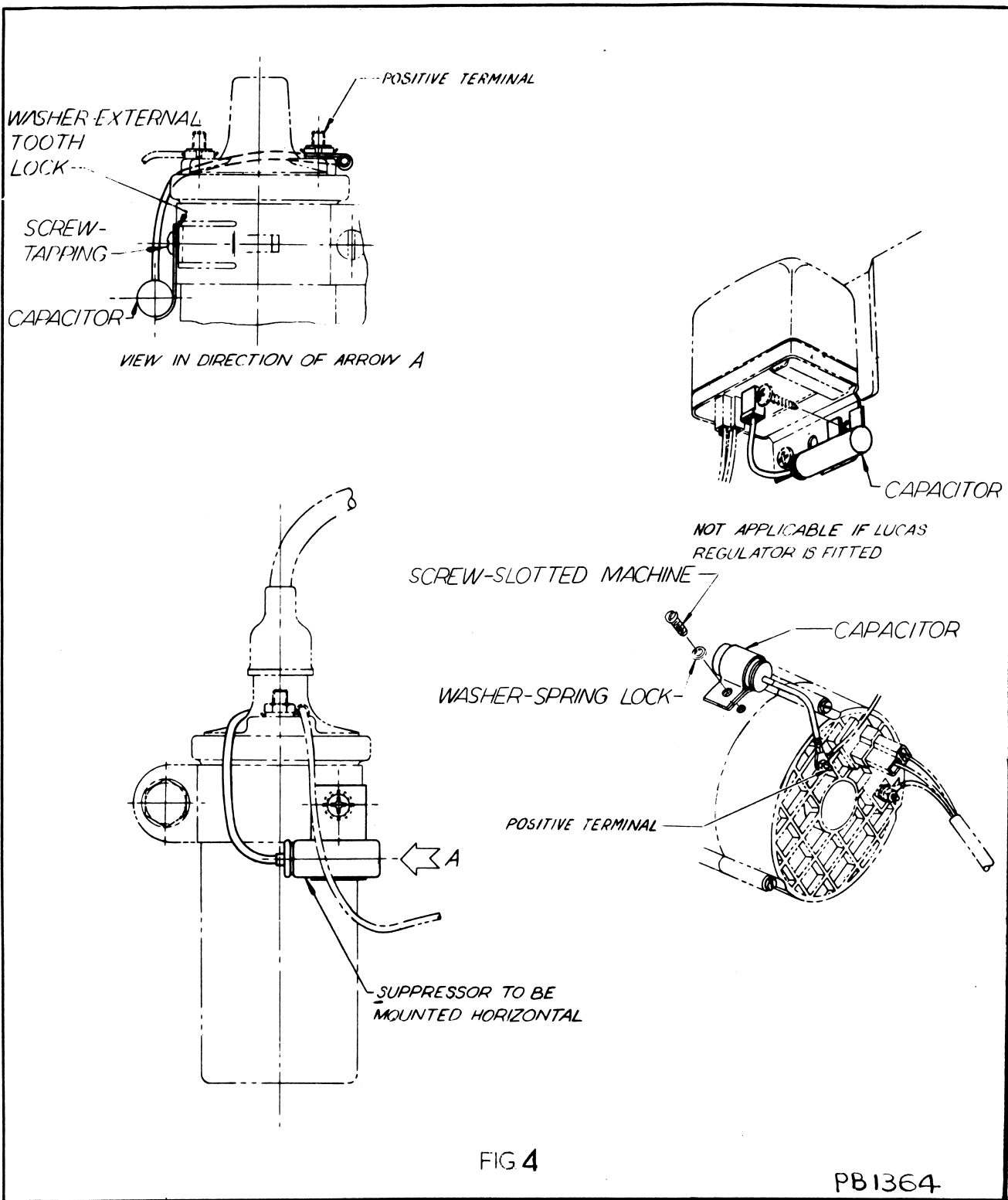


FIG 3



REAR SET SPEAKER AND FADER CONTROL COMPONENTS

4056-003-06	Speaker - 6" dia. permag.	7104-008-14	Grille
7265-004-02	Cup Washer (4)	7198-127-45	Screw (4) 1½" x 5/32" Whit. csk. hd.
7261-180-02	Flat Washer (4)	7262-010-01	Washer (4) Shakeproof, 5/32" int.
7148-303-11	Nut (4) 5/32" Whit.	7055-365-01	Clip (2) Connecting Lead
4028-002-01	Fader Control - 100 ohm	7027-155-02	Bracket - Fader Control
7150-901-02	Spacer Nut - Fader Control	7261-484-02	Washer - Fader Control
7124-140-04	Knob - Fader Control	7201-079-08	Screw (2) 3/8" x No. 8 self-tapping
7150-854-06	Barrel Nut - Fader Control	7171-015-02	Plug - Connecting Lead
7244-034-01	Terminal (4) speaker connections	1171-023-08	Connecting Lead - 24 ft. total.

# HOLDEN "HR"—PN-C7H and MN-C6H FITTING

## INSTALLATION COMPONENTS

4074-057-02 Aerial (1) supplied - 5 section, telescopic whip, top mount type, less lead-in cable. G. M. H. No. 7429301  
4077-093-67 Aerial lead-in cable - 48" overall. RHD vehicle. G. M. H. No. M35270  
4077-093-74 Aerial lead-in cable - 54" overall. LHD vehicle. G. M. H. No. 7419910  
7055-365-01 Clip (2) lead-in cable. G. M. H. No. 7410651

### Speaker and Mounting Accessories

4056-004-16 Speaker (1) 9" x 6" oval, permag. type C96L35/69/15  
7009-099-01 Mount Baffle (1) include clips and gaskets.  
7201-579-28 Screw (4) 3/8" x No. 8 Phillips hd.  
7261-163-04 Washer (4) flat steel, 3/8" x 11/64"  
7261-089-01 Washer (4) flat rubber, 1/2" x 3/32"  
7102-071-01 Organdie Gasket (1)  
7171-015-02 Plug (1) on end of lead  
7244-034-01 Terminal (2) on end of lead  
1171-023-08 Lead - 18" required  
7152-752-01 Speednut (2) No. 6 captive  
7201-577-10 Screw (2) 5/8" x No. 6 Phillips hd.  
7261-164-02 Washer (2) flat steel, 9/16" x 11/64"

#### PREMIER MODEL ONLY

7001-095-01	Wood Grain Segment Package contains:
7322-009-01	passenger side segment
7322-008-01	driving side segment

### Receiver Mounting Accessories

7027-406-02 Bracket (2)  
7152-753-03 Speednut (2) No. 8 captive, brackets  
7152-752-01 Speednut (2) No. 6 captive, receiver  
7201-027-11 Screw (2) 1/2" x No. 6 hex. hd.  
7261-164-02 Washer (2) flat steel 9/16" x 11/64"  
7201-579-08 Screw (2) 1/2" x No. 8 Phillips hd.  
7251-218-04 Washer (2) flat steel, 9/16" x 13/64"  
7124-355-01 Knob (2) tuning and volume, front  
7124-356-01 Knob (2) noise suppression and tone, rear  
7309-002-02 Barrel Screw (2)  
7261-531-02 Washer (2) chrome  
7084-239-02 Escutcheon assy (1) push button and manual receiver includes  
"Diamond Dot" emblem  
7081-002-01  
7169-431-01 Filler Bar (1) push button opening in manual escutcheon  
7152-302-01 Speednut (2) filler bar fastening.  
7070-088-02 Dial Reading (1) push button, Australian stations. G. M. H. No. M35459.  
7070-088-03 Dial Reading (1) manual, Australian stations. G. M. H. No. 35460  
7070-088-04 Dial Reading (1) push button, export numerical calibration. G. M. H. No. 7429075  
7027-407-01 Clip (2) dial fastening to escutcheon  
7209-107-03 Screw (2) 5/32" x No. 2 Deutscher, dial clip

#### SEPARATE STATE DIAL READINGS ARE AVAILABLE

#### PART NO. 7070-088-

Push Button	Styling	Manual
-05	N. S. W.	-11
-06	VIC	-12
-07	QLD/N. G.	-13
-08	STH. AUST	-14
-09	W. A/N. T.	-15
-10	TAS.	-16

### Interference Elimination and Battery Lead Accessories

4009-025-01 Capacitor (1) 3 uF shielded by-pass, alternator. G. M. H. No. 7428360  
4009-024-37 Capacitor (1) .5uF shielded by-pass, ignition coil. G. M. H. No. 7428362  
4009-024-36 Capacitor (1) .5uF shielded by-pass, regulator. G. M. H. No. 7428361  
7209-522-11 Screw (1) 1/4" x No. 8-32 Phillips hd., coil capacitor  
7262-512-02 Washer (1) shakeproof, 3/16" external, coil capacitor  
7266-012-22 Washer (1) spring 3/16", alternator capacitor  
7200-078-11 Screw (1) 5/16" x No. 10-32 cheese hd., alternator capacitor  
7055-473-01 Fuse clip (2) G. M. H. No. 7424520  
4077-222-01 Jumper Lead (1)  
4071-010-02 Fuse (1) 3 Amp. G. M. H. No. 445635  
7244-003-01 Terminal (1) on end of receiver lead  
7291-003-01 Shroud (1) lead terminal

### Components Supplied with Receiver

7005-053-01 Dial background (1)  
7031-124-01 Spacer Nut (2) 3/4" long  
7173-056-03 Dial pointer (1)  
4068-003-04 Dial lamp (2) 12 volt. 1.4W BA7S base, T2½ bulb. G. M. H. No. SP1477  
7222-065-01 Lamp Socket Body (2)  
7120-087-01 Insulator Bush (2) lamp sockets  
7086-079-01 Contact eyelet (2) lamp sockets  
7027-449-01 Light Filter and Bracket Assy (1) driving side  
7027-449-51 Light Filter and Bracket Assy (1) passenger side  
7169-436-01 Dust Shield (1) Top front of receiver